

# Air Ratchet Wrench

3/8" or 1/2" for engine repair and nut tightening work

# Air Ratchet Wrench

1/4", 3/8" or 1/2" for engine repair and nut tightening work

5403



1/2" Air Ratchet Wrench

|                      |                                |
|----------------------|--------------------------------|
| Free Speed           | 180 RPM                        |
| Ratchet Pawl         | Twin                           |
| Speed Reducer        | 3 gear, planetary              |
| Bolt Capacity        | 3/8" (10mm)                    |
| Max. Torque          | 60Ft-lbs. (81Nm)               |
| Ave. Air Consumption | 4CFM (113.3 L/min)             |
| Length               | 275mm (10.8in.)                |
| Net Weight           | 1.2kg [2.6lbs.]                |
| Air Inlet            | 1/4"                           |
| Air Pressure         | 90PSI [6.3kg/cm <sup>2</sup> ] |

5303



3/8" Air Ratchet Wrench

|                      |                                |
|----------------------|--------------------------------|
| Free Speed           | 180 RPM                        |
| Ratchet Pawl         | Twin                           |
| Speed Reducer        | 3 gear, planetary              |
| Bolt Capacity        | 3/8" (10mm)                    |
| Max. Torque          | 60Ft-lbs. (81Nm)               |
| Ave. Air Consumption | 4CFM (113.3 L/min)             |
| Length               | 275mm (10.8in.)                |
| Net Weight           | 1.2kg [2.6lbs.]                |
| Air Inlet            | 1/4"                           |
| Air Pressure         | 90PSI [6.3kg/cm <sup>2</sup> ] |

5206



1/4" Air Ratchet Wrench

|                      |                                |
|----------------------|--------------------------------|
| Free Speed           | 270 RPM                        |
| Ratchet Pawl         | Single                         |
| Speed Reducer        | Full cage gear                 |
| Bolt Capacity        | 3/8" (10mm)                    |
| Max. Torque          | 40Ft-lbs. (54Nm)               |
| Ave. Air Consumption | 3.5CFM (99.12 L/min)           |
| Length               | 222mm (8.7in.)                 |
| Net Weight           | 0.7kg [1.5lbs.]                |
| Air Inlet            | 1/4"                           |
| Air Pressure         | 90PSI [6.3kg/cm <sup>2</sup> ] |

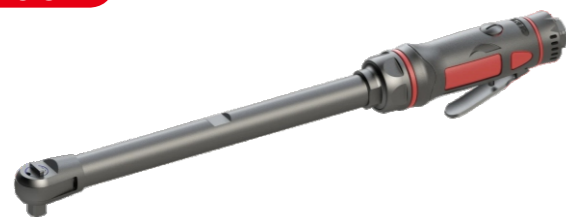
5316



3/8" Air Ratchet Wrench

|                      |                                |
|----------------------|--------------------------------|
| Free Speed           | 270 RPM                        |
| Ratchet Pawl         | Single                         |
| Speed Reducer        | Full cage gear                 |
| Bolt Capacity        | 3/8" (10mm)                    |
| Max. Torque          | 40Ft-lbs. (54Nm)               |
| Ave. Air Consumption | 3.5CFM (99.12 L/min)           |
| Length               | 222mm (8.7in.)                 |
| Net Weight           | 0.7kg [1.5lbs.]                |
| Air Inlet            | 1/4"                           |
| Air Pressure         | 90PSI [6.3kg/cm <sup>2</sup> ] |

5103



3/8" Air Ratchet Wrench, 10" Extended

|                      |                                |
|----------------------|--------------------------------|
| Free Speed           | 300 RPM                        |
| Ratchet Pawl         | Single                         |
| Speed Reducer        | 3 gear, planetary              |
| Bolt Capacity        | 1/4" (6mm)                     |
| Max. Torque          | 40Ft-lbs. (54Nm)               |
| Ave. Air Consumption | 3CFM (85.0 L/min)              |
| Length               | 400mm (15.7in.)                |
| Net Weight           | 1.3kg [2.9lbs.]                |
| Air Inlet            | 1/4"                           |
| Air Pressure         | 90PSI [6.3kg/cm <sup>2</sup> ] |

5600



Through-Hole Air Ratchet Wrench

|                      |                                |
|----------------------|--------------------------------|
| Free Speed           | 400 RPM                        |
| Through Hole Size    | 17mm                           |
| Speed Reducer        | 3 gear, planetary              |
| Bolt Capacity        | 1/4" (6mm)                     |
| Max. Torque          | 40Ft-lbs. (54Nm)               |
| Ave. Air Consumption | 3CFM (85.0 L/min)              |
| Length               | 227mm (8.9in.)                 |
| Net Weight           | 0.7kg [1.5lbs.]                |
| Air Inlet            | 1/4"                           |
| Air Pressure         | 90PSI [6.3kg/cm <sup>2</sup> ] |

5418



1/2" Air Ratchet Wrench

|                      |                                |
|----------------------|--------------------------------|
| Free Speed           | 160 RPM                        |
| Ratchet Pawl         | Single                         |
| Speed Reducer        | Full cage gear                 |
| Bolt Capacity        | 1/2" (13mm)                    |
| Max. Torque          | 120Ft-lbs. (163Nm)             |
| Ave. Air Consumption | 4CFM (113.3 L/min)             |
| Length               | 320mm (12.6in.)                |
| Net Weight           | 1.6kg [3.5lbs.]                |
| Air Inlet            | 1/4"                           |
| Air Pressure         | 90PSI [6.3kg/cm <sup>2</sup> ] |

5318



3/8" Air Ratchet Wrench

|                      |                                |
|----------------------|--------------------------------|
| Free Speed           | 160 RPM                        |
| Ratchet Pawl         | Single                         |
| Speed Reducer        | Full cage gear                 |
| Bolt Capacity        | 1/2" (13mm)                    |
| Max. Torque          | 120Ft-lbs. (163Nm)             |
| Ave. Air Consumption | 4CFM (113.3 L/min)             |
| Length               | 320mm (12.6in.)                |
| Net Weight           | 1.6kg [3.5lbs.]                |
| Air Inlet            | 1/4"                           |
| Air Pressure         | 90PSI [6.3kg/cm <sup>2</sup> ] |